

NZDA-BOP 300m Range Officer Cue Card

1.0 PRE-SHOOT CONSIDERATIONS

Consider grouping similar rifle configurations together (left hand, semi-auto, muzzle breaks). Break open rifles need special attention on handling. Has everyone **read** the **Range Standing Orders**?

2.0 DESCRIBE EVENT

e.g 5 shots, 2 non scoring sighters etc - time limit

Reminder about MISFIRES, HANG FIRES AND MALFUNCTIONS.. Keep rifle pointing downrange at target. DO NOT open bolt, Signal RO

3.0 TARGET CHANGING (PEOPLE DOWNRANGE)

Check downrange tags back on board and no one downrange before commencing range commands

4.0 RANGE COMMANDS

Command Additional advice given by RO	Comment
RANGE IS NOW IN USE	Nobody may be forward of the firing line after this command is given by the RO
SHOOTERS TO THE LINE	Call shooters to firing line
MAKE READY Fit hearing protection, make sight adjustments, insert bolts, fill magazines, Remove empty chamber indicators	Get into shooting position. Include removing safety indicator here rather than at PREPARE TO FIRE
ANYONE <u>NOT</u> READY?	If on this command a shooter is not ready, they must call, "not ready". The RO will call "NOT READY CALLED" and wait 30 seconds, and then call "are you ready?" again
PREPARE TO FIRE Shoulder the rifle, acquire the target, chamber a round	
COMMENCE FIRING	Shooters may start shooting
TIME WARNINGS Give 1 minute, 30 second time warnings as required by each match	
CEASE FIRE	The shooter will cease fire if not finished and take the firearm off aim
UNLOAD AND SHOW CLEAR	The shooter to unload the firearm, unload or remove the magazine, insert empty chamber indicator and allow the Range Officer to inspect the chamber and magazines.
FIREARMS ARE CLEAR Remove firearms from the line	The shooter should not leave the firearm or the firing line until the firearm has been checked and cleared by the Range Officer. All firearms should then be removed from the firing line. NB it is acceptable to leave removable magazines loaded on the firing line between matches
RANGE IS NOW SAFE Shooters can go downrange Take a tag	Nobody may move forward from the firing line before the Range Officer gives this command. Once this command is given, competitors and officials may move forward to score etc

Shooter Induction Cue Card

1.0 BASIC INDUCTION (NON RANGE TICKET HOLDERS)

1.1 Range Restrictions

No Danger Area Range, relies on topographic, man-made features and control of the shooter and rifle to capture all projectiles fired. Control of shooter and rifle is **CRITICAL**

No military tracer or incendiary projectiles, Max 7000 joules energy. 250g at 3050 fps, 300g at 2800fps

Prone/Bench position at any range, kneeling/seated restricted to 200m max. Offhand restricted to 100m max

1.2 Range Rules

Range Standing Orders – blue folder LHS by door, Range Standing Orders – copy on RHS by door, Also on website

Safety Indicators mandatory, RO instruct when can remove

RO will instruct when shooter can chamber round.

Only chamber round when rifle on shoulder pointed at target

Semi-autos/break open actions ok to load at hip with RO approval

Be conscious of where barrel pointing at all times

(rifles with bipods and front rests...rifle pointing upwards)

No steel silhouettes

All rifles off the firing line before anyone goes downrange (use racks)

Range commands

1.3 Other Points

Use target change tags when downrange

No handling firearms on firing line when people downrange

First aid kit in locker, Hearing protection

Misfires and hang-fires...keep pointing at target, signal RO, count to 10

2.0 ADVANCED INDUCTION (RANGE TICKET HOLDERS)

2.1 Entry and Access

Entry by main gate only - keep it locked after entering unless supervised at organised events

Set the Status Sign and raise flag

Three distinct access areas: Assembly, Active Range Area, Range Danger Area

2.2 Other Points

Record attendance in Range Register

Must use target backers, not to use own target boards

Rifle security when downrange alone

2.3 Individual Member Use of Range

Must elect a Range Officer to control shooting

1-6 shooters- Range Officer can participate, Over 6, non-participating NRO must control shooters

Visitors shooting must be controlled by NRO

Command
Additional advice given by RO
RANGE IS NOW IN USE
SHOOTERS TO THE LINE
MAKE READY Fit hearing protection, make sight adjustments, insert bolts, fill magazines, Remove empty chamber indicators
ANYONE <u>NOT</u> READY?
PREPARE TO FIRE Shoulder the rifle, acquire the target, chamber a round
COMMENCE FIRING
TIME WARNINGS Give 1 minute, 30 second time warnings as required by each match
CEASE FIRE
UNLOAD AND SHOW CLEAR
FIREARMS ARE CLEAR Remove firearms from the line
RANGE IS NOW SAFE Shooters can go downrange Take a tag

TECT All Terrain Park Emergency Procedures

IN THE EVENT OF FIRE	IN THE EVENT OF ACCIDENT
<p>DIAL 111 IF IN CELLPHONE RANGE</p> <p>NOTIFY PARK RANGER (OFFICE, CELLPHONE OR R/T)</p> <p>REPORT WHAT IS BURNING, SIZE OF FIRE AND LOCATION</p> <p>AVAILABLE TRAINED RESOURCES</p> <p>STAY IN CONTACT WITH PARK RANGER</p> <p>MOVE TO NEAREST EVACUATION SITE</p> <p>REMAIN CALM, GATHER ALL PERSONNEL, PAY ATTENTION TO ANY SUSPICIOUS ACTIVITY</p> <p>FOLLOW ANY INSTRUCTIONS FROM PARK RANGER</p>	<p>DIAL 111 IF IN CELLPHONE RANGE</p> <p>NOTIFY PARK RANGER (OFFICE, CELLPHONE OR R/T)</p> <p>REPORT TYPE OF INJURIES AND HOW MANY INVOLVED</p> <p>AVAILABLE RESOURCES, NURSE OR DOCTOR ON SITE.</p> <p>HAVE YOU REQUESTED AMBULANCE</p> <p>MOVE YOURSELF OR PATIENT IF POSSIBLE!! TO NEAREST EVACUATION SITE</p> <p>REMAIN CALM AND STAY IN CONTACT WITH PARK RANGER</p> <p>DO NOT MENTION NAMES OF INJURED PARTIES ON R/T</p>

Key contacts and locations

First Aid on site:

Park Ranger Station – 07 9298720

Park Ranger Cellphone – 027 5400052

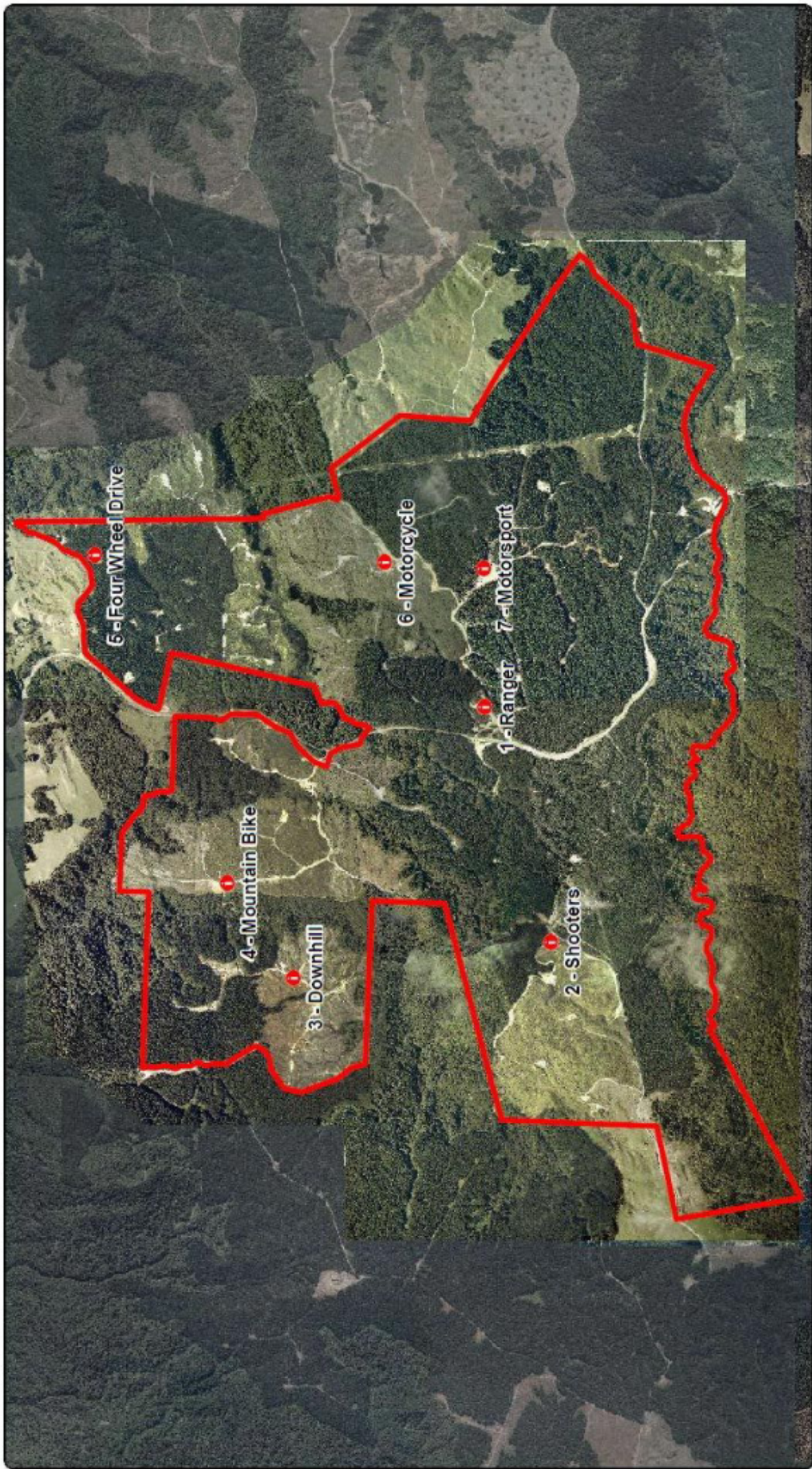
Emergency Numbers:

Police/Fire/Ambulance - 111

Greerton Police Station Number - 5783460

Greerton Fire Services - 5411357

Tauranga Fire Services - 5787099



Produced using ArcMap Version 9.3.1 by the Western Bay of Plenty District Council GIS Team.
 Crown copyright reserved. LINZ digital license no. HN/352200/03 & TD093522.
 Location of services is indicative only. Council accepts no liability for any errors.
 Archeological data supplied by NZ Archeological Assoc./Dept. of Conservation. Data copied as at Jan 2010.

Email: gis@westernbay.govt.nz
 Date: 14 Oct 2010
 Operator: Brett Steele
 Map: E:\Shape\BMS\MYD\ATPevacuation.mxd



Assembly Points for Evacuation TECT All Terrain Park



Range Open Day Notice

1 REGISTRATION

All shooters on arrival must register their attendance at the registration desk (Admin Building)

2 FIREARMS LICENCE

All shooters shall first produce their firearms licence at the registration desk. It shall be:

- the legitimate, original copy for the person presenting it.
- be valid and not expired.
- have the relevant endorsements on it for the types of firearms presented.
- Photo copy's on phones NOT acceptable.

Any person who cannot produce their firearms licence and meet the above mentioned conditions will not be allowed to shoot unsupervised on the range.

Advisory note:

If a person arrives at the range with no firearms licence but has firearms, how are we to know that this person hasn't stolen them, obtained them illegally, or has had their licence revoked. We are unwilling to put our club members at risk by supervising someone who may be in illegal possession of a firearm, so Range Officers will not supervise a shooter who is in possession of a firearm, but cannot present a valid firearms licence. It is not acceptable for another person to vouch for your possession of a firearms licence without you directly being able to present it.

3 UN-LICENCED SHOOTERS

No matter how old you are, if you do not have a firearms licence but want to use a firearm, you may do so only under the immediate supervision of someone who has a firearms licence. In other words, the person with the licence must be with the shooter, and close enough to take control of the firearm if necessary. To meet this requirement the supervisor cannot be using a firearm at the same time.

Unlicensed shooters will be required to wear a blue vest for easy identification.

Every licensed firearms holder who will be supervising an unlicensed shooter shall make themselves known to a Range Officer when approaching the firing line.

4 JUNIOR SHOOTERS

Non-Members who bring their children under the age of 18 years to shoot will need to pay the adult fee to supervise their children shooting. There is a gold coin fee for Junior shooters to they become a day member of our branch and are covered by our public liability insurance.

Junior shooters are shooters who are under 18 years old as at the end of February each year.

Juniors who are on an NZDABOP Family membership, where the Senior member is an Authorised Range User, are covered under the Seniors range ticket.

Juniors who hold an NZDABOP Junior membership can shoot for free and do not need to be an Authorised Range User.

..... **REMEMBER** junior shooters need to be under immediate supervision, so the **adult can't shoot at the same time.**

5 FIREARMS SAFETY, INSPECTION AND HANDLING

All firearms **MUST** have a safety indicator in the chamber at all times except when the Range officer allows the shooter onto the firing point and gives permission to remove the safety indicator.

This means all firearms should have a safety indicator in the chamber when you bring it out of your vehicle! NB You can buy empty chamber indicators at the registration desk.

All shooters must bring their firearms to the registration desk for inspection before taking them down to the firing line building.

All firearms in the firing line building should be in the racks, until instructed by the Range officer to bring them up to the firing line.

6 TARGET CONTENT

NZDA is a hunting organisation, and wishes to promote safe and socially accepted shooting practices. The use of targets that contain a human silhouette as the aiming point are therefore discouraged unless they are appropriate for the style of shooting being undertaken e.g military/service matches. The Chief Range Officer on duty has sole discretion on what targets are acceptable.

7 INDUCTIONS

All shooters shall complete a range induction before they can shoot on the range. Even if you have previously received an induction on another public day, you will still need to go through the induction process again.

Advisory note:

Firearms should have arrived in a bag or case with bolt & magazine out and ECI's in for bolt-action firearms, other types should have been made inoperable, bolts and ammo should be in other carry bags.

Refer to new police regulations (have copy on hand)

That firearms appear to be in good working order

8 RANGE FEES

Fees and charges for public days are as follows:

Type	Fee
Day Range Fee	\$25 for BOP Branch members who do not have a range ticket (NB no charge for members doing their range induction once they have paid for their range ticket) \$25 for member of other branches of NZDA \$50 all other adult shooters \$1 for youths under 18
Targets	NZDA Target - 100m \$2.00 200m \$4.00 Wallaby \$2.50 22 target \$2.00
Empty Chamber Indicators	\$4.00
Ear Plugs	\$2.00